

CASE STUDY



PIEPER ELECTRIC: EFFECTIVELY MITIGATING RISK WITH ALCUMUS

To find out more visit
[alcumus.com](https://www.alcumus.com)





In Alcumus all our documents are there and searchable, and we have great data to go off. The vast number of tools the Alcumus EHS management solution offers acts like a one-stop-shop for safety. We can pull up results and information for customers, which eliminates the need for big stacks of paper. Now we're able to save so much time and hold people accountable for each other's safety.

ERIC JANES

CSP, CHST, and Safety Manager
Pieper Electric

PIEPER ELECTRIC: EFFECTIVELY MITIGATING RISK WITH ALCUMUS

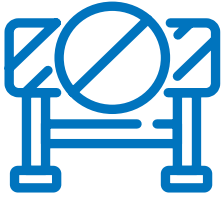
As one of the largest union electrical contractors in the United States, and the largest electrical contractor in Wisconsin, Pieper Electric offers a variety of services from electrical equipment testing and arc flash analysis, to building services and maintenance. Serving several industries in multiple locations across America since 1947, Pieper's people are the heart and soul of their business.

We had the chance to speak with Eric Janes, CSP, CHST, and Safety Manager at Pieper Electric about how they are able to stay proactive and keep their people safe. An Alcumus customer since 2017, Eric explained how our EHS management solution is able to help his team mitigate risks quickly and create a safer work environment for all.

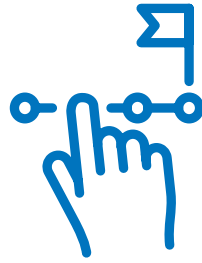
THE ALCUMUS IMPACT

- Reduced unsafe equipment usage from 25 instances bi-monthly to just 1 bi-monthly
- 96% completion rate for toolbox talks showing greater employee participation and empowerment
- Saved substantial amounts of time and the need to hire 1-2 full-time employees to manage all documentation

THE CHALLENGE



No proper method to mitigate risks on-site



Documenting and tracking completion of training and toolbox talks



Lack of transparency into safety activities

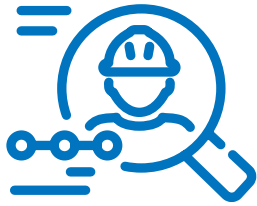
Keeping all team members safe by gaining full visibility into activities and driving accountability was a challenge Eric and his team faced. Employee safety is the number one priority at Pieper Electric and it is up to them to ensure all workers go home safely at the end of the day.

One component of this challenge is ensuring workers are trained to perform their job tasks safely to avoid incidents and injuries. **“We were having problems documenting and tracking the completion of toolbox talks and training certificates because we were using all paper copies,”** Eric shared. “We had a very difficult time holding people accountable under challenges. They were being done and just going into boxes.”

Without being able to drive accountability and follow-up on those who may not have completed the necessary training, **it was more challenging to ensure risks were mitigated on-site. This lack of transparency into safety activities was another challenge** Eric and his team faced which made it difficult to stay proactive. This led to greater instances of poor safety behavior and more incidents in the workplace.



THE SOLUTION



Able to drive accountability with greater visibility into employee activities



Substantial amounts of time saved



All forms and information centralized in one, cloud-based solution, easily accessible by all

Eric and his team realized the way they operated had to change to help properly protect their people. They looked at several different safety solutions to help solve these problems, but unfortunately none were able to deliver quite like Alcumus. It was the most customizable digital solution on the market and a great fit for Pieper Electric.

“Alcumus is more customizable than other digital safety systems in terms of toolbox talks and forms that we use,” Eric told us. “Alcumus has solved our problem for toolbox talk tracking and keeping track of JHAs (Job Hazard Analysis), safety audits, and BBSOs (Behavior-Based Safety Observations). We were doing BBSOs before, but it was on paper and then put in a filing cabinet. There wasn’t much value added. With Alcumus it’s there, searchable, and we can get necessary reports to analyze the data.”

This has helped **drive accountability among the team as they now have greater visibility into employee activities.** “Safety is everyone’s responsibility. It holds our supervisors accountable, our field-level workers accountable, and even the safety team accountable,” Eric said.

Alcumus has also helped save the team significant amounts of time. Rather than getting lost in administrative work or wasting time looking for a form in a box or filing cabinet, everything is now easily accessible in one cloud-based solution. “We’ve saved so much time and probably saved having to hire one to two full-time employees to manage all the documentation,” said Eric.

.....

After explaining to employees the many values this digital solution offers such as document centralization, having all training in one place, and more, the Alcumus EHS management solution quickly became a part of Pieper Electric’s culture.

THE IMPACT

With everything in one solution and 360-degree visibility into safety, Pieper Electric saw several improvements. It has helped boost employee participation and engagement in safety, reduced risks and injury rates on-site, and helped to create a more proactive approach to safety.

“Immediately we’ve been able to track the percentage of people who have missed or haven’t completed the total number of safety talks per trimester,” Eric shared. “This increased right away as it was more visible, and supervisors were held accountable for making sure it got done. The rate is now at 96% completion of toolbox talks.”

Eric and his team have now also been able to keep their people safer by elevating the quality of their Job Hazard Analyses (JHAs) and Behavior-Based Safety Observations (BBSOs) with the Alcumus EHS management solution. “Our JHAs and BBSO submission rates have increased significantly,” Eric said. “This is because Alcumus makes it so easy to complete within the system. This has helped increase the quality and quantity of our forms. We’re able to see this and get out there and coach the quality aspects of these forms. Before they were paper copies and people were just checking a box to get it done, but now they’re a lot more visible and I can help with quick hazard recognition training if needed.”

With more insight Eric and his team can efficiently protect their team and effectively reduce risks. For example, they discovered that due to the misuse of specific equipment surfaced through BBSO reporting, more people were getting hurt. “People were using our 18-volt bandsaw, which is a two-handed tool with one hand,” Eric explained.

“We had a lot of anonymous documentation from the field to say this has been going on behind the scenes. We were able to run a report on the Alcumus EHS management solution to get that documentation. We looked at different tools and found a 12-volt bandsaw which is one-handed, a lot safer, and more ergonomic. **This has helped us cut down on those bandsaw injuries from one to two a year to zero. Poor behavior observations of using the tool incorrectly have also decreased from 25 instances bi-monthly to now just one.**”

Participation rates have also increased significantly among the workforce. Employees are aware of the value they offer to the organization and the significant role they play in creating a safer work environment.

“We’ve been taking these behavioral-based safety reports and meeting every two months and coming out with four or five nuggets to make some changes,” Eric told us. “We publish that across all our companies and office locations and share what we’ve gathered based on employee information which has been submitted. This has led to a steady uptick in the number of observations each month. The word is out there that things are not just going in a box and that they’re being seen.”

IN CONCLUSION

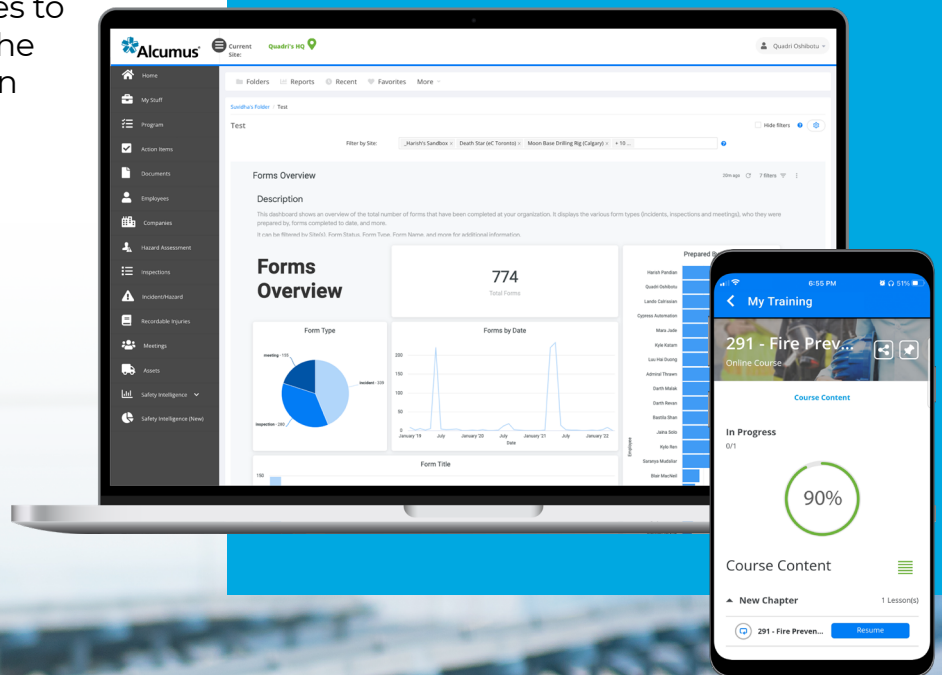
The Alcumus EHS management solution has helped Pieper Electric successfully mitigate risks, drive accountability, empower their employees and provide customers with proactive ways they are preventing injuries. This has boosted the credibility of the organization, making them more appealing for prospective employees to work for and has in turn increased current employee retention rates.

When asked what advice Eric would give to his peers in the health and safety space using paper and manual-based processes, he said, "You're crazy if you're still using paper. It's not worth it. There is so much time-wasted and little value added that way. Without this system, you would need one to two full-time employees to sit there going through that data. The Alcumus EHS management solution has made safety a lot more visible."

We're so proud to be a part of this journey with Pieper Electric, helping them create safer workplaces and protect their most important asset: their people.

Curious to learn how we can help your organization proactively mitigate risks and reduce incidents?

Speak to one of our Alcumus representatives today.



CASE STUDY

ABOUT ALCUMUS

Alcumus is a leading provider of technology-led risk management solutions providing clients with advice, expertise and support to help them identify and mitigate risks, navigate compliance and keep people safe. It supports clients with a wide range of risk management services, including products across Supply Chain Management, EHS Software, and Asset Inspection Systems.

Our people are at the heart of our business, building strong relationships with our clients to understand their needs, minimize risks and navigate compliance through our in-depth knowledge of your sector, regulations and challenges.

To find out more visit
alcumus.com

